

Performance Analysis and Benchmarking - Children Looked After

Contents

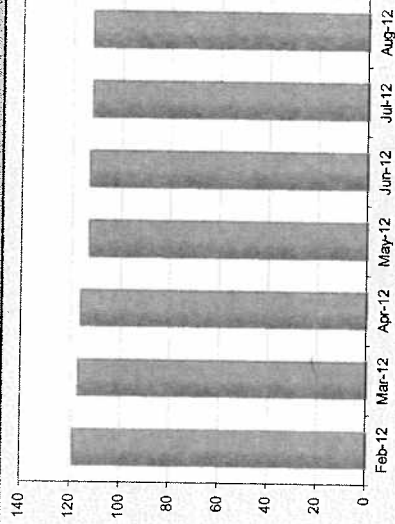
Looked After Children - Volumes and Activity	
OP369	Children in care including unaccompanied asylum seeking children
OP369a	The rate of Children in care per 10,000 pop
Op415	Children becoming looked after
Op416	Children ceasing to be looked after
OP457	Number of LAC who ceased to be looked after who had been looked after for less than a month
OP414	Percentage of Children becoming looked after previously subject to CP plan
OP453	Total No. days children have been in care (Excluding placed at home)
HY32	Percentage of children placed in Haringey Provision
Op362	Children in Care visits
Op417	Care Proceedings Initiated- (No. of children)
Op 419	Number of children missing/absconded from care at any point in the month
OP366	Children in care cases which were reviewed within required timescales
Looked After Children - Stability of Placements	
HY62	Stability of placements of looked after children: number of moves
Op63	Stability of placements of looked after children: length of placement
Care Leavers	
Op147	Care leavers in suitable accommodation
Op148	Care leavers in education, employment or training
Adoption and Special Guardianship Orders	
Op 418	Number of adoptions/special guardianship orders
Op 418a	Number of adoptions
Op 418b	Number of special guardianship orders
Op391	Timeliness of placements of looked after children for adoption following an agency decision that the child should be placed for adoption
HY433	Average days from becoming looked after to being placed for adoption for children adopted in period
Op466	Placed for adoption within 21 months of becoming looked after
	For further long term trend data, benchmarking, contextual data and performance against national thresholds, please refer to Appendix B, the Adoption Scorecard quarterly update. Please note that this is only updated quarterly.

Where available, benchmarking is provided for England, London and/or Haringey's Statistical Neighbours. Haringey's Statistical Neighbours group is defined by Ofsted based on socio-demographic information relating specifically to Children's Services and comprises Croydon, Greenwich, Hackney, Hammersmith and Fulham, Islington, Lambeth, Lewisham, Southwark, Waltham Forest and Wandsworth. The averages provided for benchmarking in this report are simple means.

This section contains a series of measures which help to provide a picture of the current children in care cohort and the service provided to them, covering the following areas: the numbers of children in care (Op389, Op389a); the movement of children in and out of care and their circumstances (Op415, Op416, Op457, Op414); service activity (Op458, HY32, Op382, Op417, Op419, Op386).

OP389 Children in care including unaccompanied asylum seeking children
OP389a The rate of Children in care per 10,000 pop

Recent trend (last 6 months)	Key	Feb-12	Mar-12	Apr-12	May-12	Jun-12	Jul-12	Aug-12	Traffic Light
Haringey Number of CiC		584	574	568	556	554	549	548	
Haringey Rate per 10,000 pop		119	117	116	113	113	112	112	Data Only
Children placed within Haringey		-	-	-	-	-	-	26%	
Children placed outside Haringey		-	-	-	-	-	-	74%	



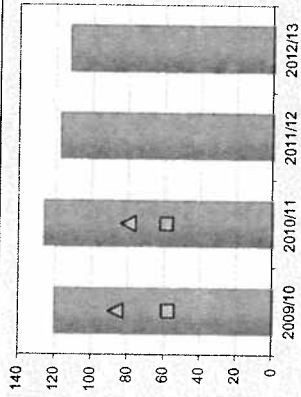
Performance Comment

- There were 548 children in care on the last day of August (520 excluding unaccompanied minors).
- This equates to a rate of 112 per 10,000 population, a significant reduction compared to this time last year (129).
- The rate remains higher than the statistical neighbour average (80 as at March 2011) and significantly higher than the England average (59).

Service Comment

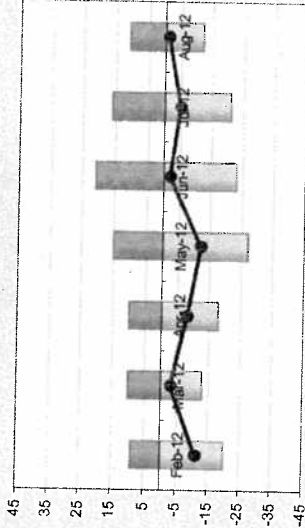
This continues to be monitored to ensure numbers are reduced appropriately and children remain safeguarded at home.

Long term trend (last 6 years)	Key	2006/07	2007/08	2008/09	2009/10	2010/11	2011/12	2012/13	Traffic Light
Haringey Number of CiC		-	427	492	591	618	574	548	
Haringey Rate per 10,000 pop		-	-	-	120	126	117	112	Data Only
Statistical Neighbours Rate per 10,000	Δ	96	91	88	87	80	-	-	
England Rate per 10,000	□	55	54	55	58	59	-	-	



Op415 Children becoming looked after and
Op416 Children ceasing to be looked after

Recent trend (last 6 months)	Key	Feb-12	Mar-12	Apr-12	May-12	Jun-12	Jul-12	Aug-12	Traffic Light
Haringey (becoming)	●	9	10	10	15	21	16	11	Data Only
Haringey (ceasing)	○	-20	-13	-18	-27	-23	-21	-12	
Haringey Net Increase / Decrease	◆	-11	-3	-8	-12	-2	-5	-1	



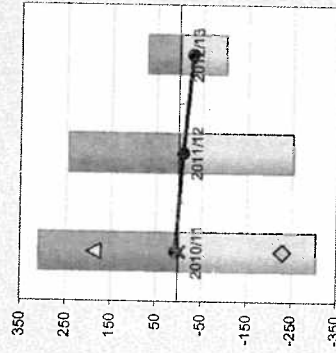
Performance Comment

- 11 children became looked after in August and 12 ceased to be looked after.
- 73 children have become looked after in the year to date and 101 have ceased to be looked after.
- The cohort has decreased by 28 children in the year to date.

Service Comment

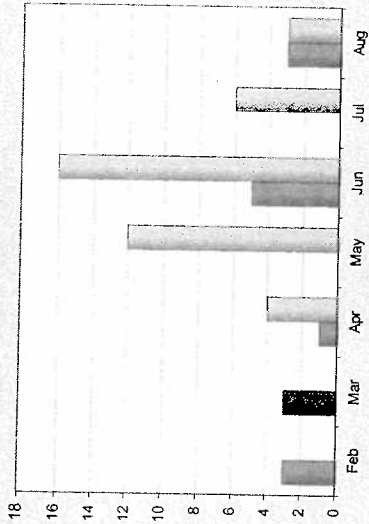
Stability in the long term social work teams has resulted in more timely management of care plans. Children are moving to more permanent care arrangements such as Special Guardianship and Adoption and where appropriate children are returning to live with family members.

Long term trend (last 6 years)	Key	2006/07	2007/08	2008/09	2009/10	2010/11	2011/12	2012/13	Traffic Light
Haringey (becoming)	●	-	-	-	-	311	245	73	Data Only
Haringey (ceasing)	○	-	-	-	-	-304	-253	-101	
Haringey Net Increase / Decrease	◆	-	-	-	-	7	-8	-28	
Stat. Neighbours (becoming)	△	208	192	193	216	189	-	-	
Stat. Neighbours (ceasing)	◇	-219	-212	-208	-219	-229	-	-	
Statistical Neighbours Net Increase	★	-11	-20	-15	-3	-40	-	-	



OP457 Number of looked after children who ceased to be looked after for less than a month

Recent trend (last 6 months)	Key	Feb-12	Mar-12	Apr-12	May-12	Jun-12	Jul-12	Aug-12	Traffic Light	Data Only
Haringey		3	3	1	0	5	0	3		
Previous Year	Key									
Haringey (previous year)				4	12	16	6	3		



Performance Comment

- In the year to date, 9 children have been looked after for less than a month before ceasing to be looked after, compared to 41 for the same period last year.

Service Comment

The service has focused on reducing the number of short term admissions to care where alternative safe arrangements can be made whilst assessments are undertaken.

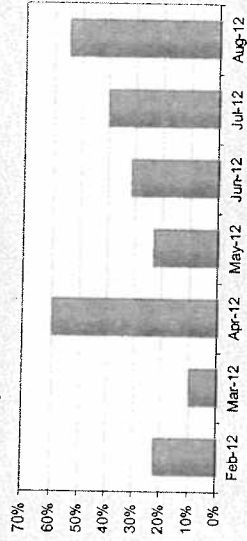
Service Comment

The service has focused on reducing the number of short term admissions to care where alternative safe arrangements can be made whilst assessments are undertaken.

There is currently no available benchmarking for this indicator. Strategy and Business Intelligence undertake regular environment scanning to ensure that benchmarking data is as complete and up to date as possible

OP414 Percentage of Children becoming looked after previously subject to Child Protection plan

Recent trend (last 6 months)	Key	Feb-12	Mar-12	Apr-12	May-12	Jun-12	Jul-12	Aug-12	Traffic Light	Data Only
Haringey		22%	10%	60%	23%	31%	40%	55%		



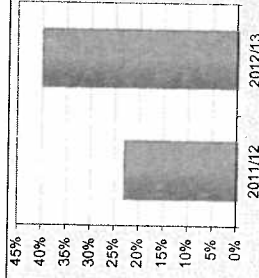
Performance Comment

The year to date figure is 40% (26 out of 65 children), up from 23% last year.

Service Comment

Caring for children away from their family home should be used when it is not possible for children to remain safely and securely at home. Child protection plans are put in place where there are significant concerns about a child's welfare, it is therefore expected that a high proportion of children and their families would have been supported whilst being subject to a protection plan before they came into care.

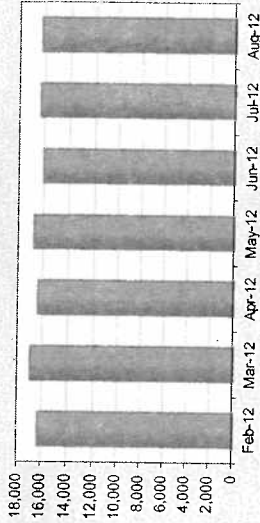
Long term trend (last 6 years)	Key	2006/07	2007/08	2008/09	2009/10	2010/11	2011/12	2012/13	Traffic Light	Data Only
Haringey		-	-	-	-	-	23%	40%		



There is currently no available benchmarking for this indicator. Strategy and Business Intelligence undertake regular environment scanning to ensure that benchmarking data is as complete and up to date as possible

OP458 Total No. days children have been in care (Excluding placed at home)

Recent trend (last 6 months)	Key	Feb-12	Mar-12	Apr-12	May-12	Jun-12	Jul-12	Aug-12	Traffic Light
Haringey		18,268	16,950	16,382	16,750	16,013	16,309	16,219	Data Only



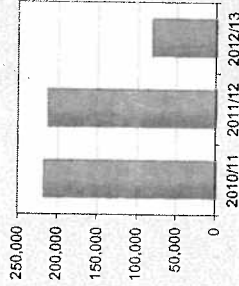
Performance Comment

- The total number of days in care in August was 16,219, slightly down on the previous month.
- The year to date figure of 81,623 is significantly lower than the same time last year (90,674).
- The number of looked after children on the last day of the month is monitored but this indicator was introduced to track the volume of work as the number of looked after children would not capture children becoming looked after or ceasing to be looked after during the month which this measure does.
- This measure is looked at alongside children who ceased to be looked after who had been looked after for less than a month where there is a decreasing trend.

Service Comment

The data demonstrates the reduction in the number of nights care provided which is also another method of monitoring the use of care over time.

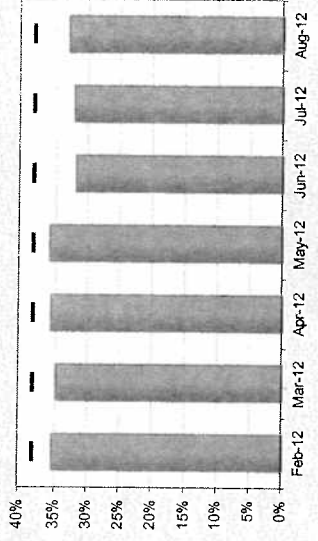
Long term trend (last 6 years)	Key	2006/07	2007/08	2008/09	2009/10	2010/11	2011/12	2012/13	Traffic Light
Haringey		-	-	-	-	217,488	212,812	81,623	Data Only



There is currently no available benchmarking for this indicator. Strategy and Business Intelligence undertake regular environment scanning to ensure that benchmarking data is as complete and up to date as possible

HY32 Percentage of children placed in Haringey Provision

Recent trend (last 6 months)	Key	Feb-12	Mar-12	Apr-12	May-12	Jun-12	Jul-12	Aug-12	Traffic Light
Haringey		35.4%	34.8%	35.6%	35.8%	31.9%	32.2%	33.0%	Red
Haringey Target	1	38%	38%	38%	38%	38%	38%	38%	



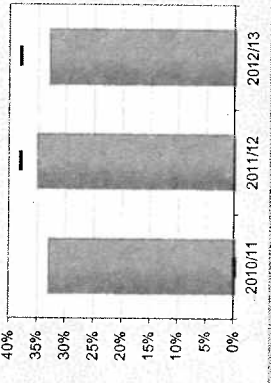
Performance Comment

- The percentage in Haringey Provision has declined since April and remains well below the 38% target.
- 181 out of 548 children were in Haringey provision in August, compared to 202 out of 568 in April. A reduction in the number of in house foster care placements and those placed for adoption (from 202 in April to 181 in August) has also been noted.

Service Comment

Work is being undertaken to maximise the use of in-house foster carers. This includes more consistently reviewing those who are not able to foster for a short period of time (allegations / holidays / other breaks). All fostering vacancies are now considered at Resources Panel which will ensure maximisation of internal resources. We are also updating our training plan for foster carers to support them to manage a greater range of children and young people.

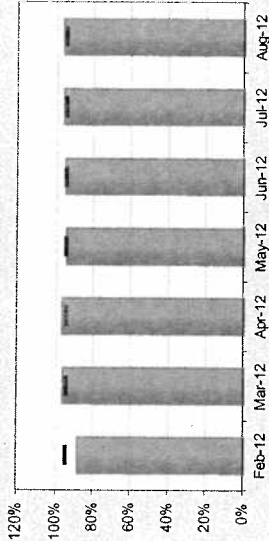
Long term trend (last 6 years)	Key	2008/07	2007/08	2008/09	2009/10	2010/11	2011/12	2012/13	Traffic Light
Haringey		-	-	-	-	33.0%	35.0%	33.0%	Red
Haringey Target	1	-	-	-	-	-	38%	38%	



There is currently no available benchmarking for this indicator. Strategy and Business Intelligence undertake regular environment scanning to ensure that benchmarking data is as complete and up to date as possible

Op382 Children in Care visits (% of visits due which were completed within the 6 week timescale)

Recent trend (last 6 months)	Key	Feb-12	Mar-12	Apr-12	May-12	Jun-12	Jul-12	Aug-12	Traffic Light
Haringey	■	88.4%	96.7%	97.0%	94.8%	95.4%	96.5%	96.3%	Green ●
Haringey Target	■	95%	95%	95%	95%	95%	95%	95%	●



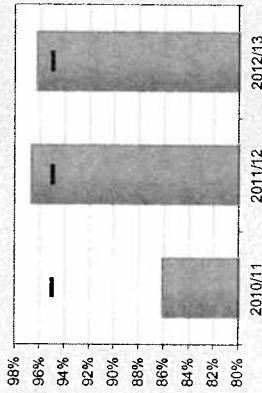
Performance Comment

- 96.3% of children in care visits are up to date, above the 95% target.
 - This is based on a 6 week timescale or for lower risk children 3 monthly timescale where this has been notified to performance

Service Comment

Staff in the service worked hard to maintain visits during the olympic and school holiday period. Whilst the present figure is good we are still striving to reach 100%.

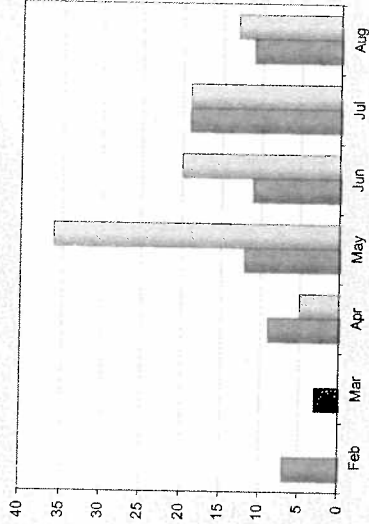
Long term trend (last 6 years)	Key	2006/07	2007/08	2008/09	2009/10	2010/11	2011/12	2012/13	Traffic Light
Haringey	■	-	-	-	86.1%	96.7%	96.3%	95%	Green ●
Haringey Target	■	-	-	-	95%	95%	95%	95%	●



There is currently no available benchmarking for this indicator. Strategy and Business Intelligence undertake regular environment scanning to ensure that benchmarking data is as complete and up to date as possible

Op417 Care Proceedings Initiated- (No. of children)

Recent trend (last 6 months)	Key	Feb-12	Mar-12	Apr-12	May-12	Jun-12	Jul-12	Aug-12	Traffic Light
		7	3	9	12	11	19	11	Data Only
Haringey				Apr-11	May-11	Jun-11	Jul-11	Aug-11	
Haringey (previous year)				5	36	20	19	13	



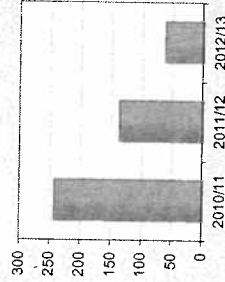
Performance Comment

- There were 11 children where care proceedings were initiated in August and 62 in the year to date.
- The year to date figure is lower than the 93 care proceedings initiated by this point last year.

Service Comment

There has been a reduction in the number of care proceedings issued compared to the same period last year. This figure is monitored at the monthly joint Legal Services and Children and Families meetings to ensure court processes are used appropriately.

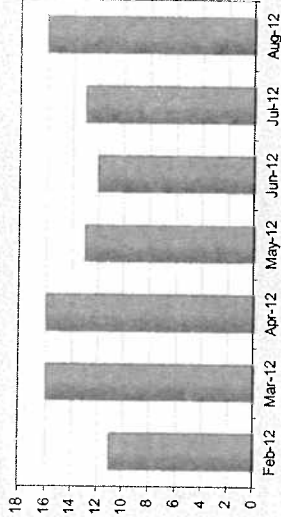
Long term trend (last 6 years)	Key	2006/07	2007/08	2008/09	2009/10	2010/11	2011/12	2012/13	Traffic Light
		-	-	-	-	243	137	62	Data Only
Haringey									



There is currently no available benchmarking for this indicator. Strategy and Business Intelligence undertake regular environment scanning to ensure that benchmarking data is as complete and up to date as possible

Op 419 Number of children missing/absconded from care at any point in the month

Percent trend (last 6 months)	Key	Feb-12	Mar-12	Apr-12	May-12	Jun-12	Jul-12	Aug-12	Trend Light
Haringey		11	16	16	13	12	13	16	Data Only



Performance Comment

- 16 children were missing from care during the month of August and 3 remained missing at the end of the month.
- The number of children missing is similar to the level seen this time last year.
- The quarterly numbers which monitor children who have gone missing in the 3 month period and do not include duplicate children which have gone missing in more than one month has remained fairly consistent.

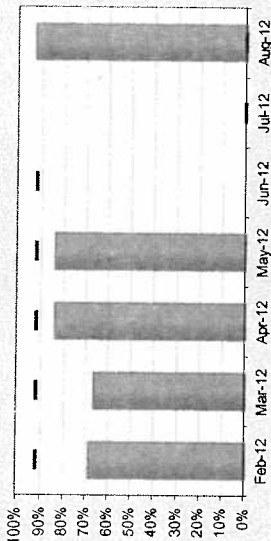
Service Comment

During August 10 of the 16 young people who went missing were missing for a period of over 48 hours. In most cases we have contact with the young person and all but one of these young people have now safely returned to their placements. The lead member and DCS have weekly updates on children who are reported as missing.

There is currently no available benchmarking for this indicator. Strategy and Business Intelligence undertake regular environment scanning to ensure that benchmarking data is as complete and up to date as possible

OP386 Children in care cases which were reviewed within required timescales

Recent trend (last 6 months)	Key	Feb-12	Mar-12	Apr-12	May-12	Jun-12	Jul-12	Aug-12	Traffic Light
Haringey	68.6%	66.5%	84.1%	84.1%	92%	-	-	92.9%	Green
Haringey Target	92%	92%	92%	92%	92%	-	-	-	●



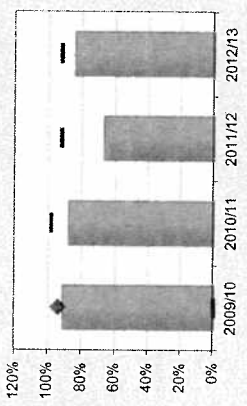
Performance Comment

- There has been a problem with the system report that pulls the data for reviews. We are working with the provider but some issues have not been resolved.
 -As previously discussed a localised system for reporting has given a provisional figure of 93% which the service feel can be improved upon.

Service Comment

The Service have created a localised report which provides the data. The end of August figure is provisional 92.9%. This means that the April and May 2012 figures are incorrect, attempts will made to run reports for these months retrospectively.

Long term trend (last 6 years)	Key	2006/07	2007/08	2008/09	2009/10	2010/11	2011/12	2012/13	Traffic Light
Haringey	91%	-	-	91.1%	87.8%	66.5%	84.1%	92%	Green
Haringey Target	92%	94%	-	-	96%	92%	92%	92%	●
London	91%	93%	92%	94%	-	-	-	-	◆



Looked After Children - Stability of Placements

These measures relate to the stability of placements of looked after children. The first (HY62) is based on the number of placements each child in the cohort has experienced. It gives the percentage of children who have had three or more placements during the last year (the figures shown are therefore for a rolling year e.g. June 2011 to July 2012). The second measure (Op63) is based on the length of placement; it gives the percentage of all children who have been in care for at least 2.5 years who have been in the same placement for at least 2 years.

HY62 Stability of placements of looked after children: number of moves

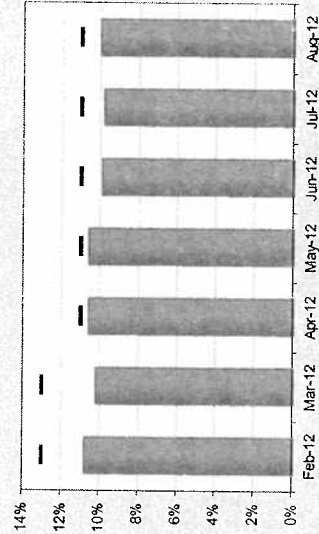
Recent trend (last 6 months)	Key	Feb-12	Mar-12	Apr-12	May-12	Jun-12	Jul-12	Aug-12	Traffic Light
Haringey	▲	10.8%	10.2%	10.6%	10.6%	9.9%	9.8%	10.0%	Green ●
Haringey Target	—	13%	13%	11%	11%	11%	11%	11%	●

Performance Comment

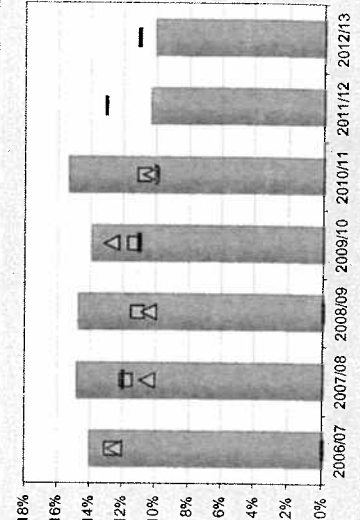
- 55 out of 548 (10%) looked after children have had 3 or more placements in the last year.
- This is within the target and around the level of our statistical neighbours (10.3% for 2010/11).
- The number of children with two placements is also tracked and appears to be increasing (73 or 13% as at August).

Service Comment

Extensive work has been done to develop the role of the Resources Panel and the documents which provide information from the LA to providers in order that together we are best placed to match a child or young person with a carer. The aim is that as far as possible, we get the right placement at the point the child first comes into care and that each plan considers a child's long term needs. We are undertaking work to ensure that the monitoring of providers is more systematic and proactive, with the aim of preventing problems that might result in breakdown at the earliest possible stage. The Safeguarding Quality Assurance team did a review of 60 children who have had 2 placement moves and who may be risk of further moves in order to further support the placements and identify trends and issues which will inform Commissioning and care planning.

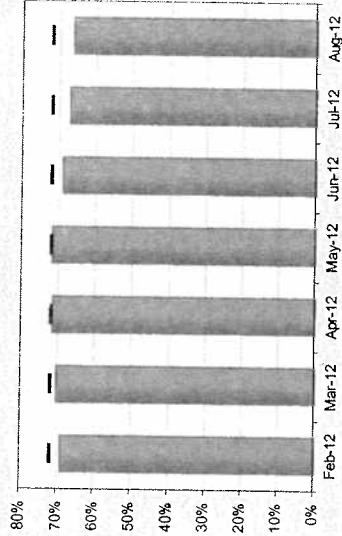


Long term trend (last 6 years)	Key	2006/07	2007/08	2008/09	2009/10	2010/11	2011/12	2012/13	Traffic Light
Haringey	▲	14.0%	14.8%	14.7%	13.9%	15.3%	10.3%	10.0%	Green ●
Haringey Target	—	-	12%	-	11%	10%	13%	11%	●
Statistical Neighbours	▲	12.5%	10.5%	10.4%	12.7%	10.3%	-	-	-
London	◆	12.1%	11.2%	11.1%	11.4%	-	-	-	-
England	□	12.7%	11.8%	11.1%	11.3%	10.7%	-	-	-



Op63 Stability of placements of looked after children: length of placement

Recent trend (last 6 months)	Key	Feb-12	Mar-12	Apr-12	May-12	Jun-12	Jul-12	Aug-12	Traffic Light
Haringey	■	69.1%	70.3%	71.6%	71.8%	68.9%	67.2%	66.3%	Red
Haringey Target	■	72%	72%	72%	72%	72%	72%	72%	●



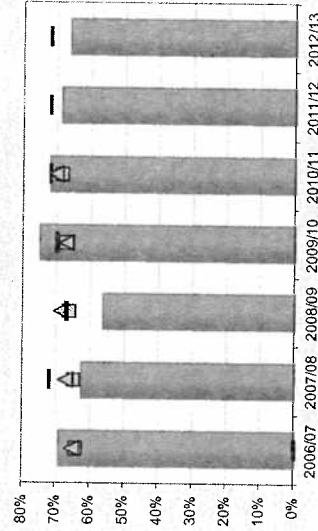
Performance Comment

- 66.3% of children under 16 (124 out of 187 cohort) who have been in care for 2.5 years have been in the same placement for at least 2 years.
- There has been a steady decline in children in the same placement for 2 years plus and the percentage is at the lowest it has been since September 2010 although the numbers in care for 2.5 years have been increasing (187 at August 2012 compared with 143 at August 2011).
- Performance is lower than the target of 72% and slightly below statistical neighbour average.

Service Comment

Work is underway by the service, assisted by reports from the performance team to understand the children affected and the patterns of placements. It is expected that in some cases children may move placement for positive reasons, for example a planned move from a short term placement to a long term; more permanent placement. The service needs to ensure that the moves are not a result of lack of placement choice or poor care planning.

Long term trend (last 6 years)	Key	2006/07	2007/08	2008/09	2009/10	2010/11	2011/12	2012/13	Traffic Light
Haringey	■	69.0%	62.7%	56.3%	75.0%	72.0%	68.6%	66.3%	Red
Haringey Target	■	-	72%	67%	70%	72%	72%	72%	●
Statistical Neighbours	△	65.3%	67.3%	68.7%	67.3%	70.4%	-	-	
London	◇	64.6%	66.8%	68.0%	66.6%	-	-	-	
England	□	64.3%	65.0%	66.2%	67.4%	66.6%	-	-	



Care Leavers

These measures are based on young people who turn 19 in the month; 65 young people are due to turn 19 in 2012/13. Monthly percentages for this indicator are therefore based on small numbers and should be interpreted with care. The status of the young people concerned needs to be established within four months of leaving care otherwise they cannot be counted as in EET or in suitable accommodation. Accommodation is deemed suitable if it provides safe, secure and affordable provision for young people.

Op147 Care leavers in suitable accommodation

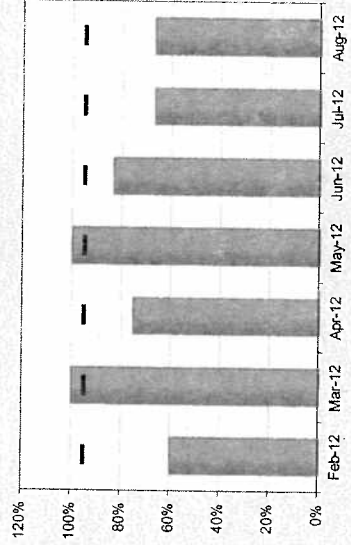
Recent trend (last 6 months)	Key	Feb-12	Mar-12	Apr-12	May-12	Jun-12	Jul-12	Aug-12	Traffic Light
Haringey	■	60%	100%	75%	100%	83%	67%	67%	Red ●
Haringey Target	■	95%	95%	95%	95%	95%	95%	95%	●

Performance Comment

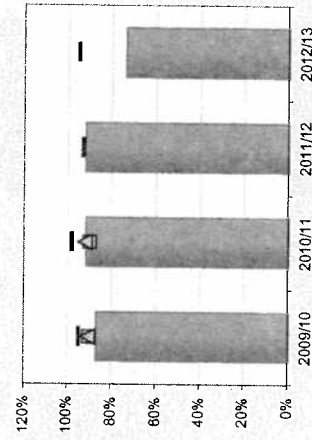
- 74% (17 out of 23) of care leavers for the year to date were in suitable accommodation, against a 95% target.
- 2 out of 3 young people who left care in August were in suitable accommodation.

Service Comment

The numbers are small and therefore data needs to be interpreted with care, however those that were not in suitable accommodation during this timeframe were either held in custody or found to have All Rights of Appeal Exhausted, or not in touch due to warrant for arrest.

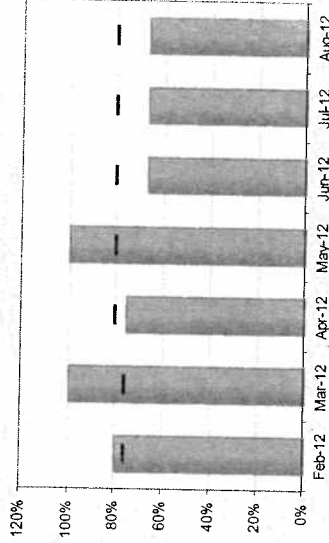


Long term trend (last 6 years)	Key	2006/07	2007/08	2008/09	2009/10	2010/11	2011/12	2012/13	Traffic Light
Haringey	■	-	-	-	87%	92%	92%	74%	Red ●
Haringey Target	■	-	95%	95%	95%	98%	93%	95%	●
Statistical Neighbours	△	92%	92%	89%	91%	92%	-	-	
London	◆	89%	90%	88%	-	-	-	-	
England	□	87%	88%	90%	90%	90%	-	-	



Op148 Care leavers in education, employment or training

Recent trend (last 6 months)	Key	Feb-12	Mar-12	Apr-12	May-12	Jun-12	Jul-12	Aug-12	Traffic Light
Haringey	■	80%	100%	75%	100%	67%	67%	67%	Red
Haringey Target	■	76%	80%	80%	80%	80%	80%	80%	●



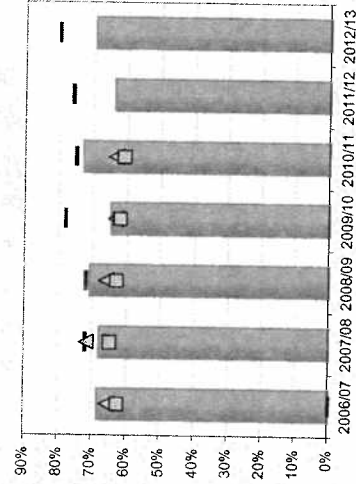
Performance Comment

- As at the end of August 16 out of 23 care leavers (67%) were in education, employment or training (EET), below the 80% target.
- This figure compares favourably with statistical neighbours.

Service Comment

The numbers are small and therefore the data needs to be interpreted with care, however those not in ETE during this time frame this was either due to having All Rights of Appeal Exhausted, NRPf and therefore not eligible for ETE, in custody with no ETE, or not in touch due to a warrant for arrest.

Long term trend (last 6 years)	Key	2006/07	2007/08	2008/09	2009/10	2010/11	2011/12	2012/13	Traffic Light
Haringey	■	68%	68%	71%	65%	73%	64%	70%	Red
Haringey Target	■	-	72%	72%	78%	75%	76%	80%	●
Statistical Neighbours	△	66%	72%	66%	63%	63%	-	-	
London	◆	66%	68%	65%	67%	-	-	-	
England	□	63%	65%	63%	62%	61%	-	-	

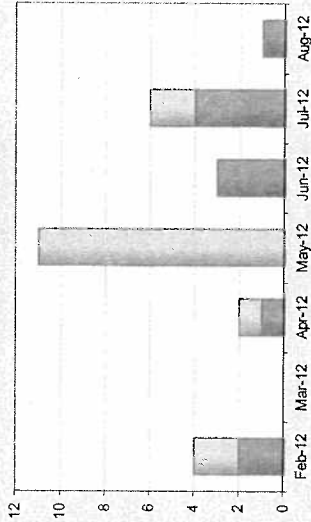


Adoption and Special Guardianship Orders

This section provides information on the volume of adoptions and special guardianship orders and the timeliness of placements of looked after children for adoption following an agency decision (% placed within 12 months). It also provides a monthly update on the three key adoption scorecard indicators A1, A2 and A3 relating to the timeliness of the adoption process. For further long term trend data, benchmarking, contextual data and performance against national adoption indicators, please refer to Appendix B, the Adoption Scorecard quarterly update. Please note that this is only updated quarterly due to the relatively small number of children involved - more regular updates may be misleading as small variations can skew the outcomes.

Op 418 Number of adoptions/special guardianship orders
 Op 418a Number of adoptions
 Op 418b Number of special guardianship orders (SGOs)

Recent trend (last 6 months)	Key	Feb-12	Mar-12	Apr-12	May-12	Jun-12	Jul-12	Aug-12	Traffic Light
Haringey (Adoptions and SGOs)		4	-	2	11	3	6	1	Data Only
Haringey- Adoptions		2	-	1	-	3	4	1	
Haringey- SGOs		2	-	1	11	-	2	-	



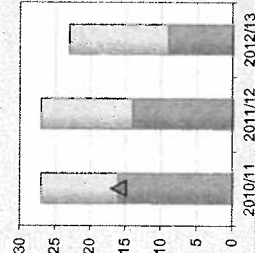
Performance Comment

- There have been 9 adoptions in the year, 1 of these in August. The target set for adoptions is 15 and we are on track to meet this. This compares with 5 adoptions and 5 SGOs at this point last year.
 - There have been 14 special guardianship orders in the year to date; more than there were in all 2011/12.

Service Comment

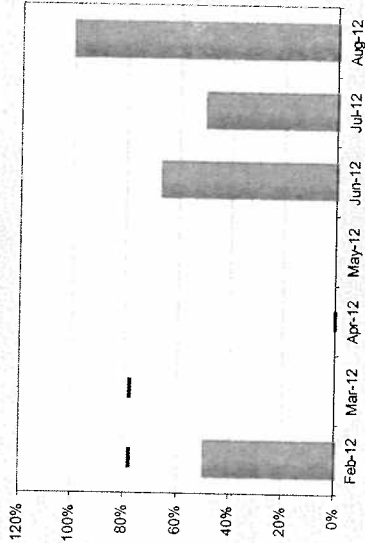
The additionality has been achieved with improved systems for monitoring, creative efforts by the staff concerned and some additional staffing.

Long term trend (last 6 years)	Key	2006/07	2007/08	2008/09	2009/10	2010/11	2011/12	2012/13	Traffic Light
Haringey (Adoptions and SGOs)		-	-	-	-	27	27	23	Data Only
Haringey- Adoptions		-	-	-	-	16	14	9	
Haringey- SGOs		-	-	-	-	11	13	14	
Stat. Neighbours (adoptions only)	▲	19	18	17	17	16	-	-	



Op391 Timeliness of placements of looked after children for adoption following an agency decision that the child should be placed for adoption

Percent trend (last 6 months)	Key	Feb-12	Mar-12	Apr-12	May-12	Jun-12	Jul-12	Aug-12	Traffic Light
Haringey	■	50%	-	-	-	67%	50%	100%	
Haringey Target	■	78%	-	-	-	-	-	-	



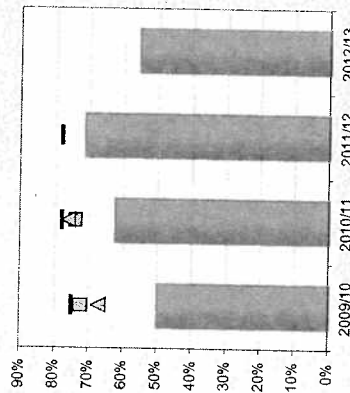
Performance Comment

- This indicator is included for information but is superseded by the new adoption scorecard indicators listed below.
 - In the year to August 5 out of 9 looked after children (56%) were placed for adoption within 12 months of the decision that they should be placed for adoption.
 - This represents a decline in performance from 2011/12 (71%) and is below latest benchmarking data for statistical neighbours (76% in 2010/11).

Service Comment

This indicator remains challenging as once the 12 months have passed, the target is not met, regardless of how long or how soon afterwards the child is placed. That placement will count as 'target not met' until all children who have waited longer than 12 months are placed. This is being monitored using the same systems as Op418.

Long term trend (last 6 years)	Key	2006/07	2007/08	2008/09	2009/10	2010/11	2011/12	2012/13	Traffic Light
Haringey	■	-	-	-	50%	63%	71%	56%	
Haringey Target	■	-	72%	-	75%	78%	78%	-	
Statistical Neighbours	△	68%	66%	79%	67%	76%	-	-	
London	◆	65%	71%	77%	74%	-	-	-	
England	□	75%	76%	75%	72%	74%	-	-	



HY483

Average days from becoming looked after to being placed for adoption for children adopted in period (Adoption Scorecard Indicator A1)*

* This figure relates to adopted children only (it excludes children placed for adoption)

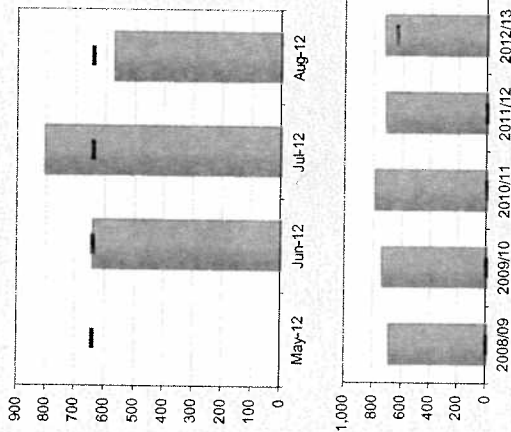
Recent trend	Key	Feb-12	Mar-12	Apr-12	May-12	Jun-12	Jul-12	Aug-12	Traffic Light
Haringey	-	-	-	797	N/A	639	805	571	Red
National Threshold	-	-	-	639	639	639	639	639	●

Performance Comment

- The average days from becoming looked after to being placed for adoption was 722 days for the period April to August 2012. This is above the 639 day target (rolling 3 years) which is based on national threshold levels for 2010-2013 and slightly above the 2011/12 figure of 715 days.
- The one child adopted in August took 571 days better than the national threshold level.
- The service are looking at setting targets specific to Haringey taking account of the children already in the system and the new children coming into the system with an aim to outstrip the 639 day threshold for new children.

Service Comment

The service are looking at setting targets specific to Haringey taking account of the children already in the system and the new children coming into the system with an aim to outstrip the 639 day threshold for new children. Currently the service are working to a universal 3 month target between the achievement of a placement order to identification of permanent placement. There are 61 children whose plan for adoption has been approved as at the end of August, 14 of these have been placed for adoption. Of the 61 children 19 have had the decision made this year and the average days looked after for these children as at the 1st September is 450 days. The average days for the decision to be made is 348.



Long term trend	Key	2006/07	2007/08	2008/09	2009/10	2010/11	2011/12	2012/13	Traffic Light
Haringey	-	-	-	686	736	784	715	722	Red
National Threshold	-	-	-	-	-	-	-	639	●

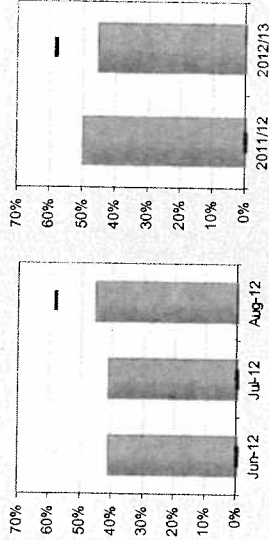
Three year average	2008-11	2009-12
Haringey	739	747
Statistical Neighbours	717	
England	625	

Op486

**Placed for adoption within 21 months of becoming looked after
(Adoption Scorecard Indicator A3)***

* This figure relates to adopted children and children placed for adoption. Figures shown are year to date figures as at the end of the month indicated.

Recent trend	Key	Feb-12	Mar-12	Apr-12	May-12	Jun-12	Jul-12	Aug-12	Traffic Light
Haringey	-	-	-	43%	38%	41%	41%	45%	Red
Provisional Target	-	-	-	58%	58%	58%	58%	58%	●



Performance Comment

-As at August 45% (10 out of 22) children were placed for adoption within 21 months of becoming looked after. This is below the provisional target (based on the national average)

Service Comment

A number of the children placed for adoption in the time period had been looked after for some considerable time. The increased volume of placements made includes children who have been looked after for some time which impacts negatively on the percentage placed within 21 months. There are a number of very young children and 3 relinquished babies, for whom placements have been identified, which will impact positively on this indicator. Increased management scrutiny through permanency tracking and adoption linking meetings will assist in achieving the target of adoption within 21 months.

Long term trend	Key	2006/07	2007/08	2008/09	2009/10	2010/11	2011/12	2012/13	Traffic Light
Haringey	-	-	-	-	-	-	50%	45%	Red
Provisional Target	-	-	-	-	-	-	-	58%	●

Three year average	2008-11	2009-12
Haringey	41%	41%
Statistical Neighbours	54%	
England	58%	

Average time between a local authority receiving court authority to place a child and the local authority deciding on a match to an adoptive family (days)

(Adoption Scorecard Indicator A2)

Performance Comment

- Haringey's 3 year average (2008-11) is 239 days from the local authority receiving court authority to place a child and matching with an adoptive family.
- The national threshold for 2010-13 is 213 days, so based on 2008-11 levels Haringey is 26 days short of the threshold.
- Measuring progress on this indicator is reliant on CAF/CASS releasing data at local authority level.

Three year average	2008-11
Haringey	239
Statistical Neighbours	172
England	132

Service Comment

As with Op391, monitoring systems and additional resource are speeding up family work. The numbers will come down as the number of children who have already waited a long time are placed.